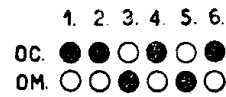


- C 1 1.000 pF
- C 2 50 pF
- C 3 50 pF
- C 4 235 pF
- C 5 200 pF
- C 6 200 pF
- C 7 0.1 MF
- C 8 50 KpF
- C 9 200 pF
- C10 200 pF
- C11 200 pF
- C12 2000 pF
- C13 5000 pF
- C14 50000 pF
- C15 25000 pF
- C16 200 pF
- C17 10000 pF
- C18 32-32 MF
- C19 25000 pF
- R 1 20 KΩ
- R 2 10 KΩ
- R 3 2 MΩ
- R 4 10 MΩ
- R 5 1 MΩ
- R 6 0.2 MΩ
- R 7 0.2 MΩ
- R 8 0.1 MΩ
- R 9 140 Ω
- R10 1600 Ω

Valvola	Tipo	TENSIONE AI PIEDINI							
		1	2	3	4	5	6	7	8
V 1	UCH41	12,6	155	70	—	70	- 1	—	27
V 2	UAF42	39	70	—	—	70	- 1	—	27
V 3	UAF42	12,6	50	—	—	30	- 1	—	—
V 4	UL41	39	175	—	—	155	—	8	84
V 5	UY41	84	170	—	—	—	—	185	115



5531

S.A. FIMI - Mod. PHONOLA 5531 - Onde medie e corte. Media frequenza 470 kc. Potenza d'uscita 1,5 watt.